




Open Space, Sport and Recreation Study
14th November 2017


New Local Plan

- Aim to meet needs for homes, jobs, shopping, and leisure
- Policies to protect historic and natural environment
- Encourage investment & economic growth
- Policies to consider planning applications
- Mediate between different competing needs/uses
- Aspirational but realistic



Consultation

- 26th July to 30th November 2017
- City wide letter/leaflet drop
- On line consultation, on social media and in libraries
- Exhibitions in Highcross
- Community Ward meetings
- Stakeholder events




Help shape the future of Leicester

Have your say on the new Local Plan for the city
consultations.leicester.gov.uk

2007 Open Space, Sport and Recreation study

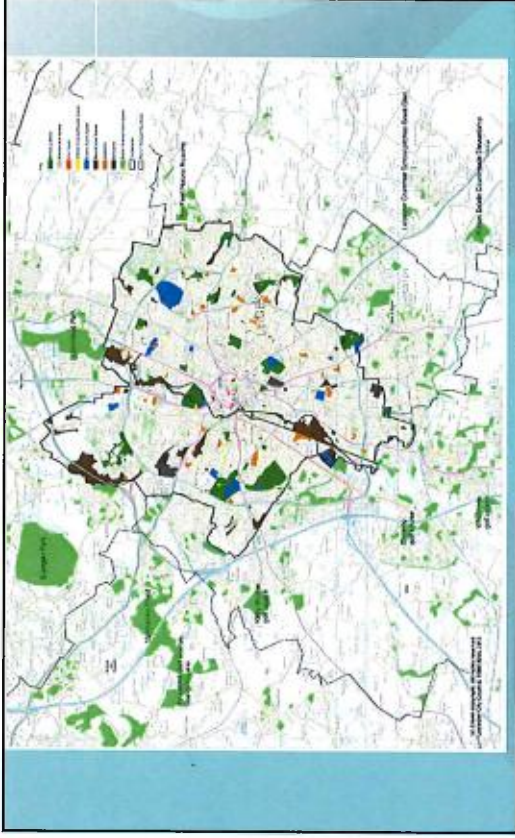
- First undertaken in 2007.
- Considered Quality, Quantity and Accessibility of open space.
- Recommended a standard of 2.88ha/1000 population.



2017 Study

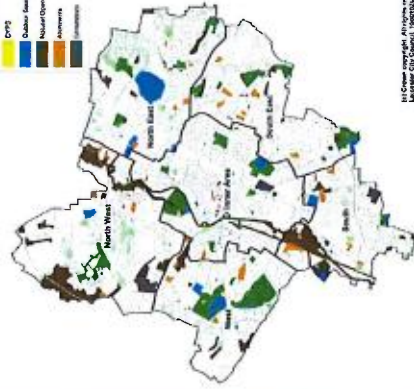
- Change in central government policy
- Surveys all open spaces owned and managed by public bodies/trust.
- Categorised into six types.
- Use of new areas to calculate quantity.

Open Space, Sport and Recreation Study
2017



Types of Open Space, Sport & Recreation Provision in Leicester

- Leicester
- Private Gardens
- Virtual Open Space
- Local Council
- CPRE
- Quaker's Green Meadows
- Natural Open Spaces
- Arboreta
- Other



Map © Crown Copyright. All Rights Reserved
Leicester City Council, 2017



Results

TOTAL FOR CITY BY AREA

	Total Existing Quantity (Publicly Accessible) ha	Required Quantity (ha)	Sufficient/Deficiency
Inner Area	151.31	337.31	-186.00
North East	198.97	132.78	66.19
North West	257.68	99.69	157.99
South	175.39	108.81	66.58
South East	115.63	110.40	5.24
West	203.07	159.31	43.76
TOTAL FOR CITY	1102.05	948.29	153.75


These results are using the 2.88ha /1000 population standard.

Currently the city is providing 3.35ha /1000.




Quality of Open Space

- Overall Good, number of national Green Flag Awards.
- Local 'Love Parks' award instigated this year.
- Regular quality audits.
- Series of Outdoor Gyms installed.
- Some open spaces would benefit from enhancements but dependent on available funding.



Key Challenges in the Local Plan

- Population Growth
- Housing Need— 34,000 by 2031
- Future Employment Needs – 45ha Employment land
- Open Space – 1102ha – retention?
- Biodiversity and Heritage



Healthy Places



Extending cycle networks



Leigle Leicester promotes walking route




Outdoor gyms located in city parks and open spaces



OSSR questionnaire

- Runs alongside the Local Plan Consultation
- Designed to assess quality, quantity and accessibility.
- Considers cross boundary implications.



Next Steps

- Consideration of contributions from public, stakeholders and members
- Undertake technical studies which will inform development options.
- Draft plan with draft policies and site allocations
- Balance to be struck on delivering on housing, employment and open space allocations



Timetable

- Emerging Options, Sites & Development Management policies consultation: July - November 2017
- Revised Draft Local Plan: Winter 2017 - Spring 2018
- Further public consultation
- Public Examination and plan adopted: end of 2018

